

## Donaghys Splicing Instructions

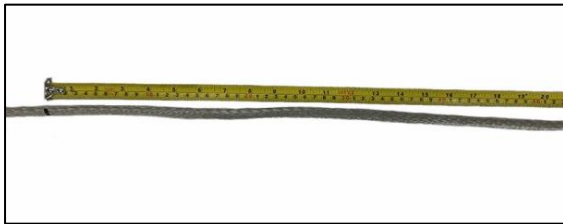
### 12-strand Inverted Lock Splice



#### Equipment Required

1. Splicing Fid Set
2. Black Marker
3. Electrical Tape
4. Tape Measurer
5. Stanley Knife
6. Donaghys Winchline

#### Step One



Lay the end of the rope out flat on a work bench. Starting from the end, measure the distance required for the bury length. The bury length is calculated as  $70 \times \text{rope dia.}$  Using the Black Marker, make a mark on the rope at this point (Mark 1).



#### Step Two

Using Mark 1 as a reference, form an eye in the rope to the desired eye size and make another mark (Mark 2).



#### Step Three

Take the end of the rope; insert it into the end of an appropriate size fid and tape to hold in place. Enter the fid into Mark 2 inserting it through the centre of the rope ensuring there are 6 strands above and below the fid. Continue to pull the rope all the way through until Mark 1 passes through and past Mark 2.



**Step Four**

From Mark 1, approx. one diameter length down towards the end of the rope, form a large hole big enough to fit the eye through.



**Step Five**

Take the eye and feed it completely through the hole and to the other side until a twist forms in the end of the rope/bury length.



**Step Six**

From the end of the rope/bury length, loop as shown in the picture towards the eye, pass the rope through the same hole the eye went through. Pull the rope/bury length all the way through to take out the twist.



**Step Seven**

Manipulate the rope until Mark 1 & 2 crossover. Measure the eye to ensure it is to the desired size. This forms the lock.



### Step Eight

Take the end of the rope; insert it into the end of an appropriate size fid and tape to hold in place. Two pick lengths from where Mark 1 & 2 crosses over; insert the fid into the centre of the rope to start the burying of the rope. Continue pushing the fid down until the entire bury length/rope is buried.



### Step Nine

Extract the bury length from the centre of the braid, cut the end from the fid and fan out.



### Step Ten

Take 50% of the bury length out from the centre of the rope. Evenly spaced apart, extract 11 strands alternate Z & S twist. Once completed, cut strands away to form the taper. Milk the outer strands from the eye down the body of the rope to assist bedding in the splice and bury taper. If practical apply load to assist the bedding in process.



### Step Eleven

Splice is now complete. Proof load if required to meet specification or in line with relevant standard.