

Donaghys Splicing Instructions

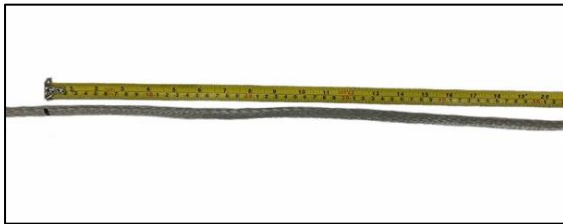
12-strand Full Bury with Lockstitch



Equipment Required

1. Splicing Fid Set
2. Black Marker
3. Electrical Tape
4. Tape Measurer
5. Stanley Knife
6. Donaghys Winchline

Step One



Lay the end of the rope out flat on a work bench. Starting from the end, measure the distance required for the bury length. The bury length is calculated as $70 \times \text{rope dia.}$ Using the Black Marker, make a mark on the rope at this point (Mark 1).



Step Two

Using Mark 1 as a reference, form an eye in the rope to the desired eye size and make another mark (Mark 2). *Note, this is the same splice used if a thimble is required particularly if the rope is to be used in conjunction with shackles, wire or chain.*



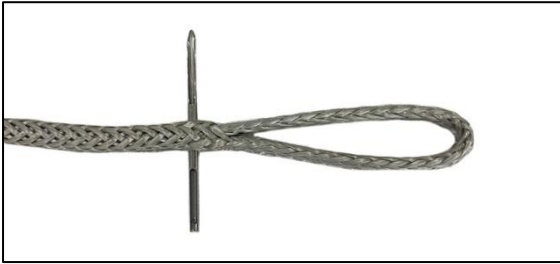
Step Three

Take the end of the rope; insert it into the end of an appropriate size fid and tape to hold in place. Enter the fid into Mark 2 and inserting down the centre of the braid. Continue to push the fid all the way down the centre of the braid until Mark 1 & 2 meet.



Step Four

Measure the eye to ensure it is the correct desired size and the rope is not twisted.



Step Five

Using a small fid or spike, insert through the centre of the outer and inner strands to hold in place so that the eye size doesn't change.



Step Six

Establish the bury length from the centre of the braid, cut the end from the fid and fan out.



Step Seven

Measure one strand down from base of eye splice and extract one strand from the bury length. If the rope is made up of 2 strands per strand, then extract both strands.



Step Eight

Take 50% of the bury length out from the centre of the rope. Evenly spaced apart, extract 11 strands alternate Z & S twist. Once completed, cut strands away to form the taper. Milk the outer strands from the eye down the body of the rope to assist bedding in the splice and bury taper. If practical apply load to assist the bedding in process.



Step Nine

Measuring two strands from where the lockstitch strand has been extracted, insert fid through the centre of the braid ensuring there are 6 strands above and below the fid. Insert the end of the locking stitch into the fid and pull through. This is called 1 stitch. Proceed down the body of the rope with 3 stitches and then back towards the eye with another 3 stitches.



Step Ten

Ensure 6 even stitches along each side. Finish by passing the lock stitch through the rope at a 45 degree angle.



Step Eleven

Splice is now complete. Proof load if required to meet specification or in line with relevant standard.